

# [ WiBro ]

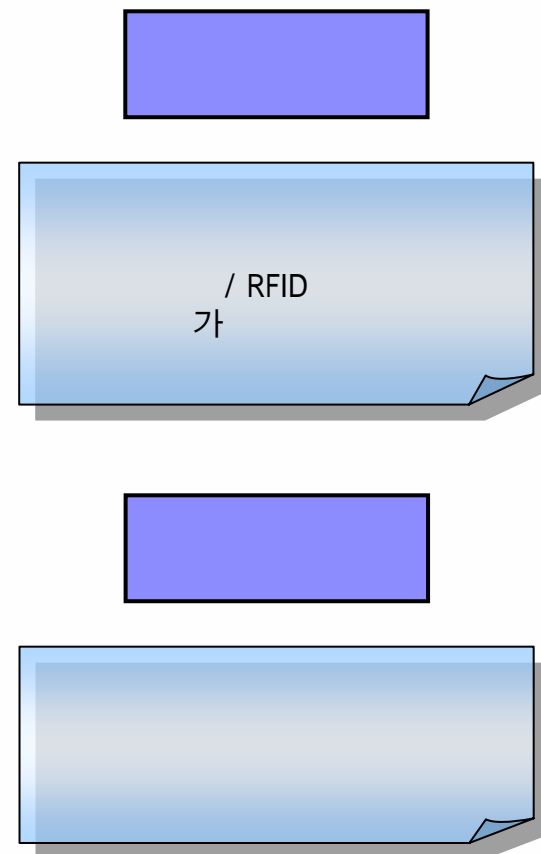
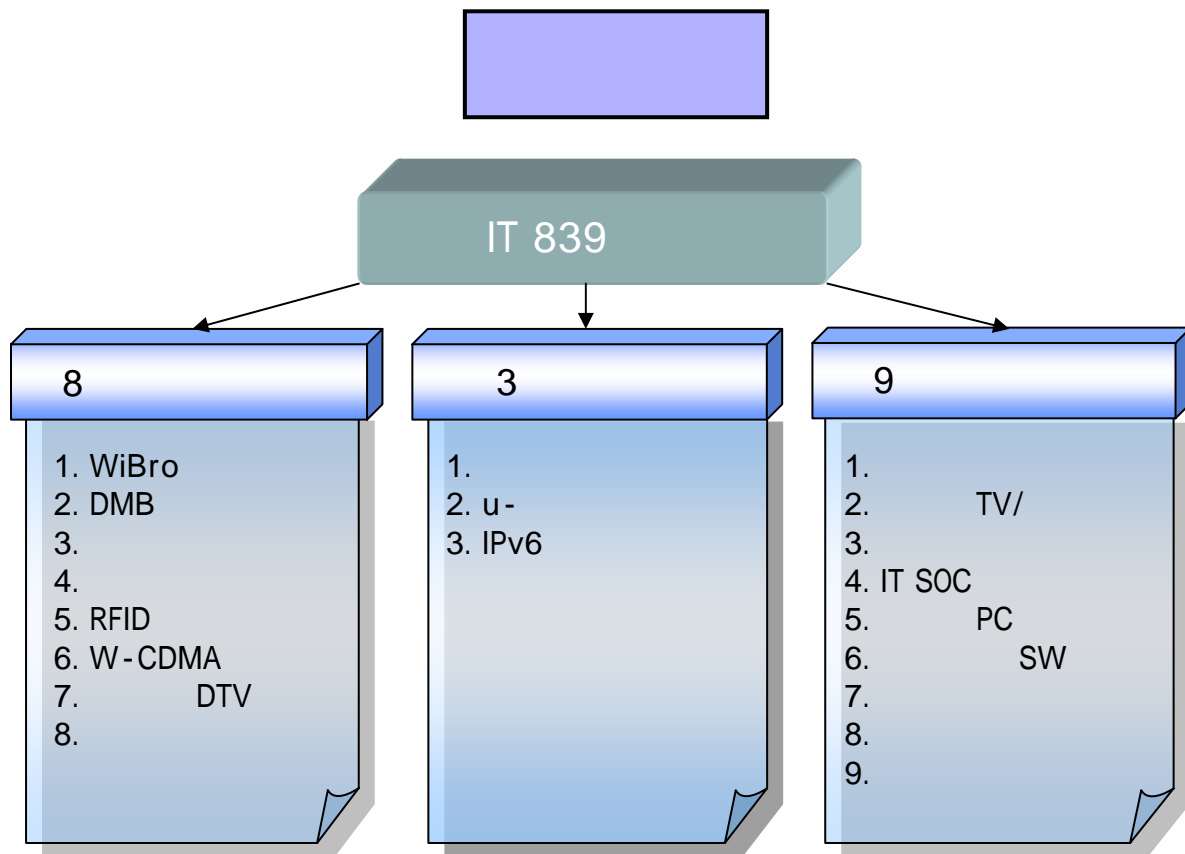


98004152

98004153

20012705

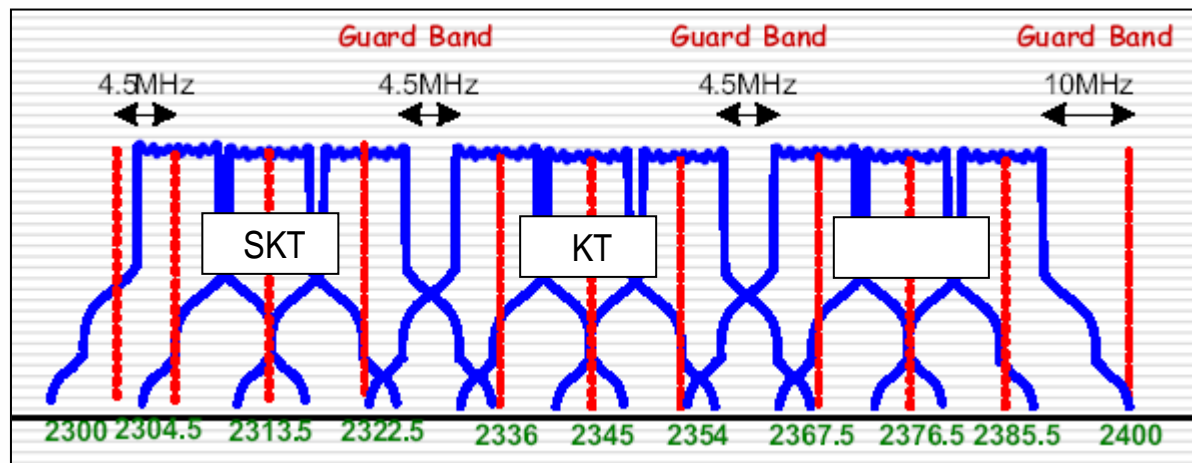
- 1 WiBro
- 2 WiBro
- 3 WiBro
- 4 WiBro
- 5 WiBro
- 6 WiBro



# WiBro

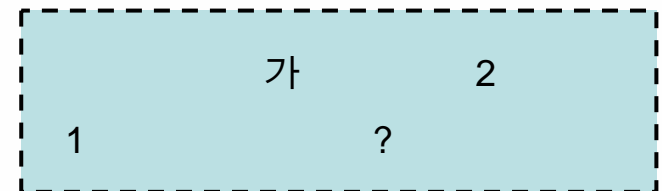
[2/2]

## WiBro



< : POSDATA >

- 1 (2300 ~ 2327 MHz)
- 2 (2331.5 ~ 2358.5 MHz)
- 3 (2363 ~ 2390 MHz)







# WiBro

[1/3]

1)



가

	<b>휴대형 단말기</b>	<b>언제 어디서나</b>	<b>정지 및 이동중</b>	<b>고속 데이터 접속</b>	
	<ul style="list-style-type: none"><li>● 핸드폰, PDA, 핸드헬드 PC, 노트북 등 다양한 휴대형 단말기</li></ul>	<ul style="list-style-type: none"><li>● 실내/외 어디서나 Seamless한 접속</li></ul>	<ul style="list-style-type: none"><li>● 60Km/h 이상의 이동속도로 무선인터넷 서비스 제공</li></ul>	<ul style="list-style-type: none"><li>● 가입자당 최고 3Mbps 정도</li></ul>	
<b>단말기</b>					<b>이동요금</b>
	[핸드폰형]	[PDA]	[핸드헬드PC]	[노트북PC]	<ul style="list-style-type: none"><li>- 월 3~4만원</li><li>- 정액제+증량제의 혼합형</li><li>→ 저렴한 요금 제공</li></ul>

2)



	LAN		
			,
가	Mbps	1Mbps	100Kbps
		60Km/h	250km/h
	, PDA	, PDA,	, PDA
	100m	1km	1 ~ 3km
		+	



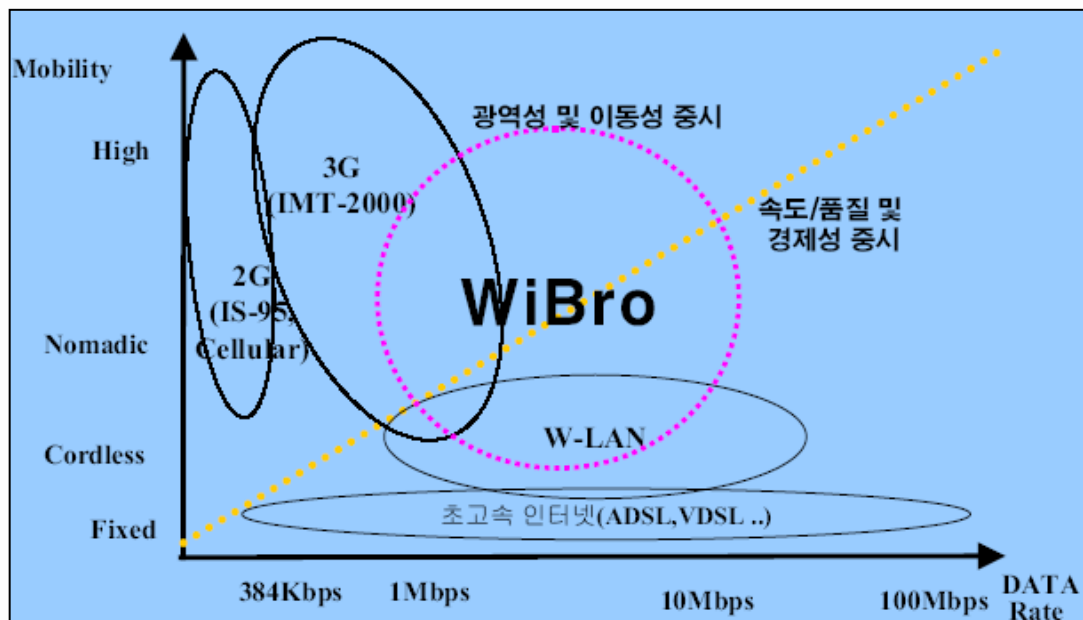
# WiBro

[3/3]

3)

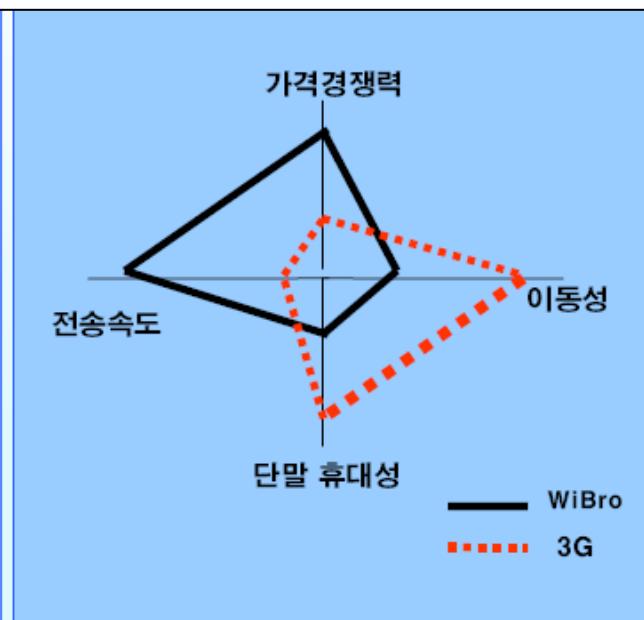


3G



< WiBro >

>



< WiBro >

>

< : KT >

# WiBro

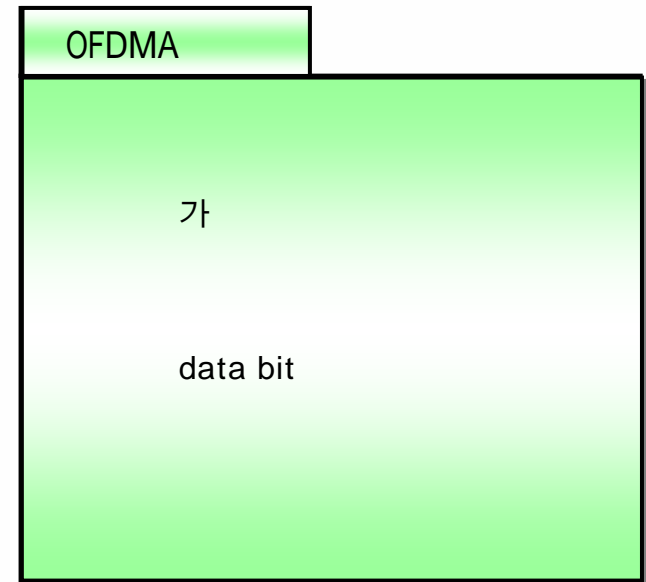
(1/2)

		TDD <sup>1)</sup>
		OFDMA <sup>2)</sup>
		10MHz
가	/	: 128Kbps/1Mbps
	/	: 512Kbps/3Mbps
		1
		: Downlink/Uplink(6/2)
		: Downlink/Uplink(2/1)
		, : 150ms
		60km/h
		(Picocell) : 100m (Microcell) : 400m (Macrocell) : 1Km

<

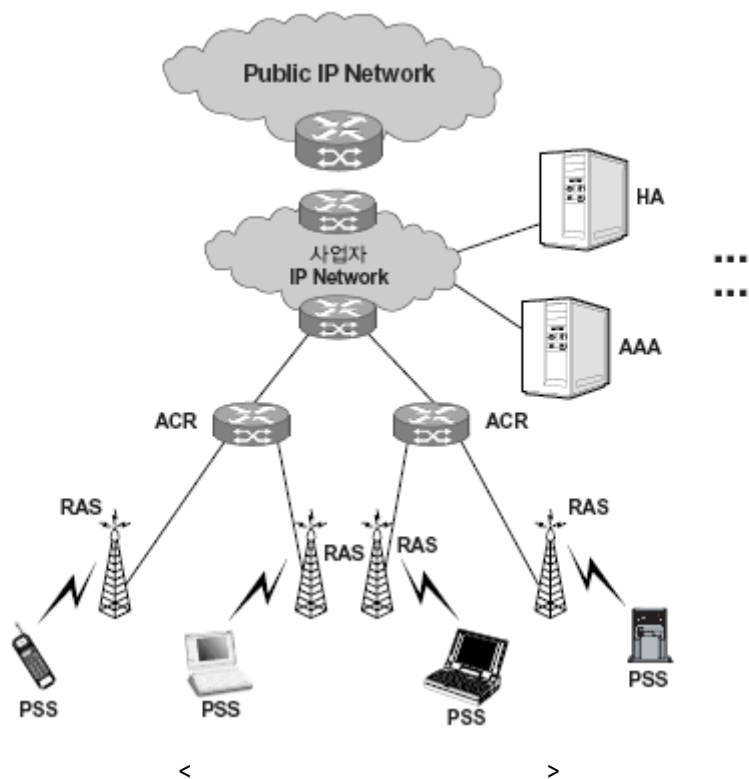
>

1)



- 1) TDD : Time Division Duplex
- 2) OFDMA : Orthogonal Frequency Division Multiplexing Access





### ACR (Access Control Router)

- IP
- 
- QoS
- IP
- 
- ACR      RAS
- 

HA : Home Agent

AAA : Authentication, Authorization, Accounting

BS (Base Station) : RAS + ACR

< : TTA >

# WiBro

[1/3]

1)

## Information

- Web Browsing
- File Downloading
- 양방향 뉴스 및 정보
- 원격 교육
- Home Networking



## Entertainment

- 대용량 VOD, MOD, AOD
- 실시간 Streaming 방송
- Network Game
- Multimedia Messaging



## Communication

- Instant Messaging 서비스
- Multimedia Messaging 서비스
- 화상 채팅 및 게시판



## Commerce & Biz

- M-Commerce
- 텔레매틱스
- Interactive Advertisement
- 물류 등 전문 서비스
- Biz Solution



### 2) Hardware

Hardware	Processor	900MHz	(MP3 )	
	ROM	256 MB		
	RAM	128 MB		
		Size : 3	: 320x240, 30	
		80	4	( )
		2Mpixel , Flash		
		SD/MMC(SDIO)		
		, QWERTY Keypad		
		USB 2.0(host), PC	interface, Mic, Speaker, LED	

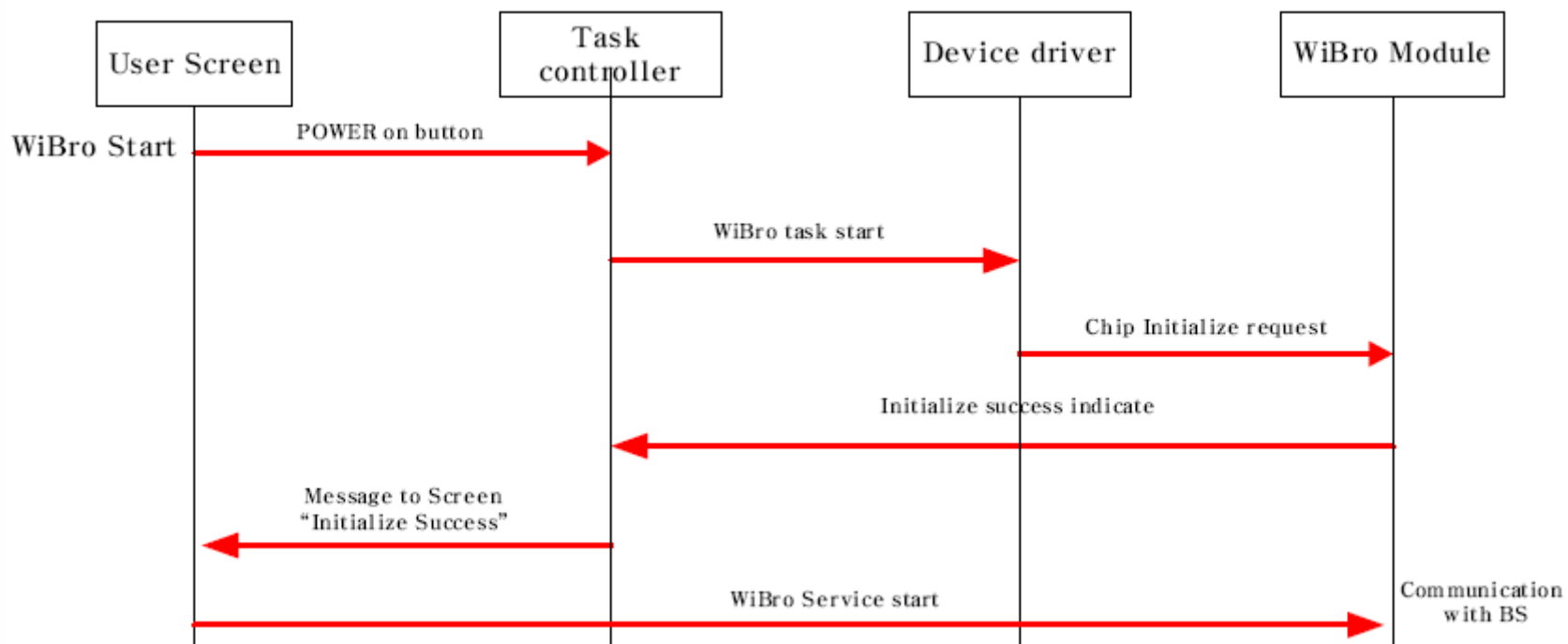
### 3) Software

Software	OS	Window CE, Symbian, Linux OS
		Flash media play, File upload/download, ( ) (TCP/IP,UDP,HTTP,SMTP,POP3 )
		MS office, PDF file
		/ , / ,
		Image viewer, , E-mail client
	PC sync	PC link cable
		Configuration

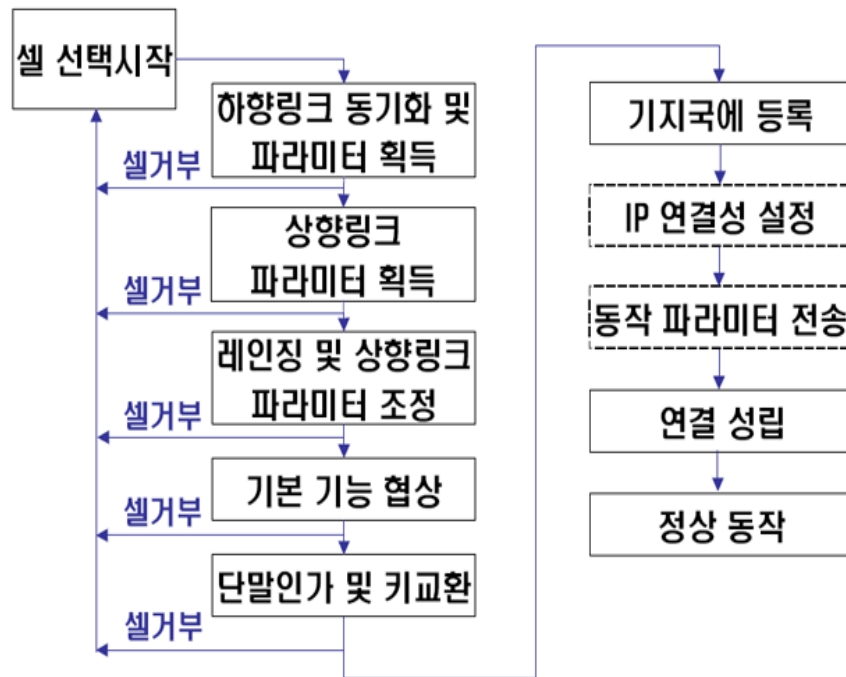
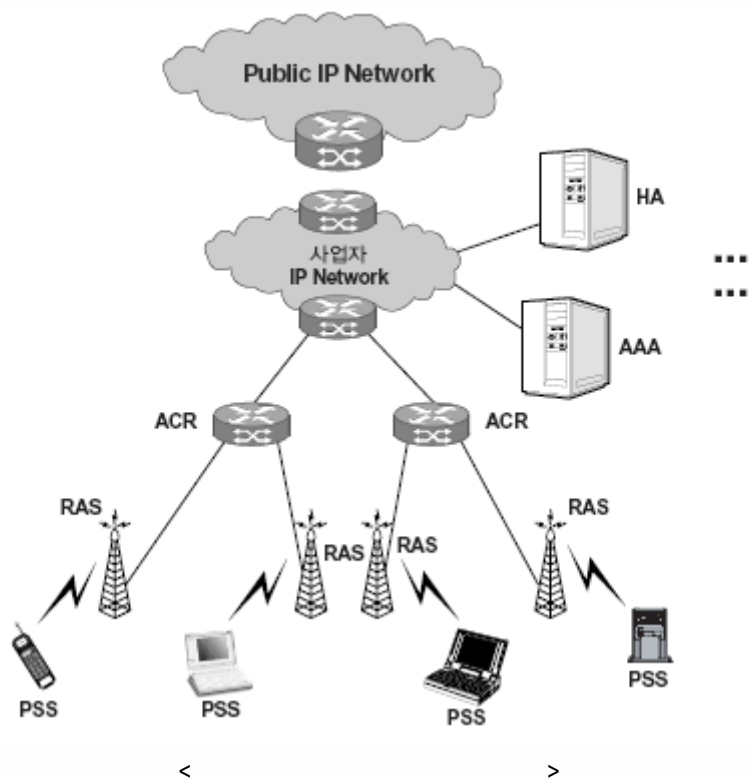
# WiBro

[1/2]

1)



2)

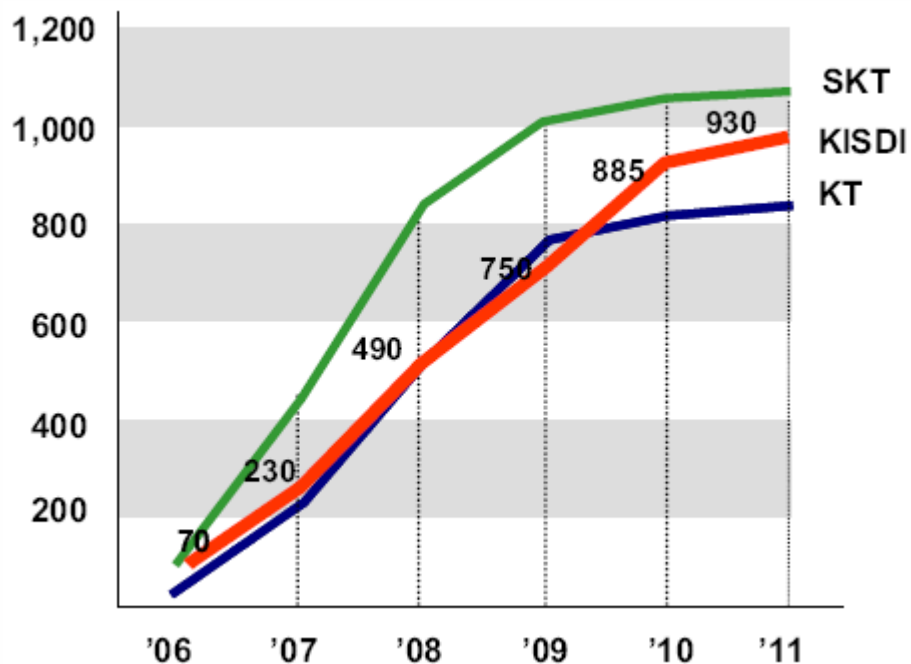




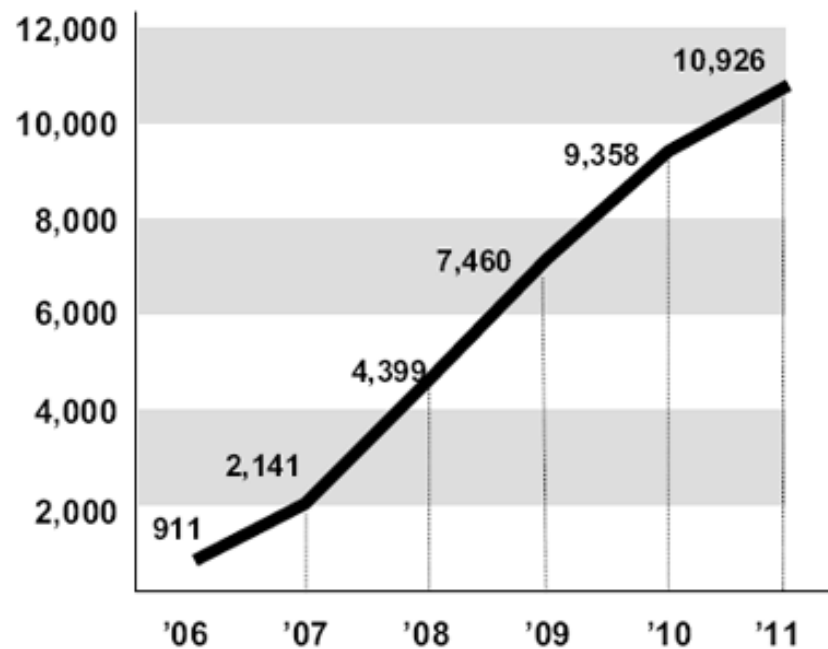
## 1) 가



### 가



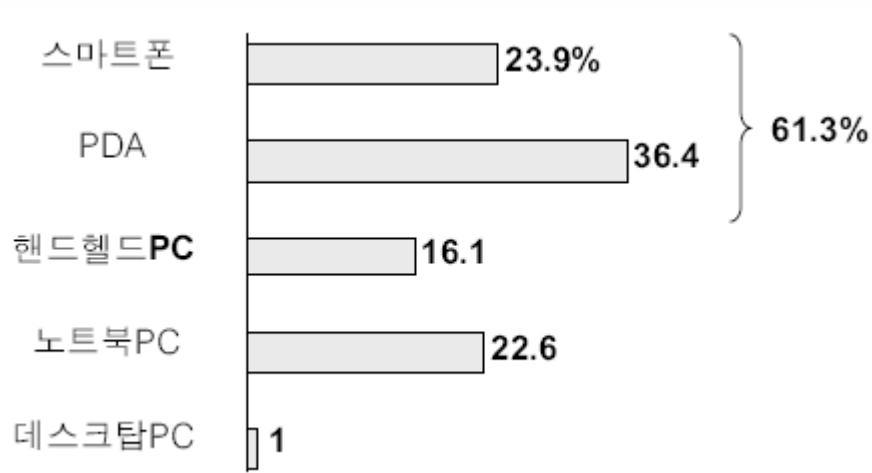
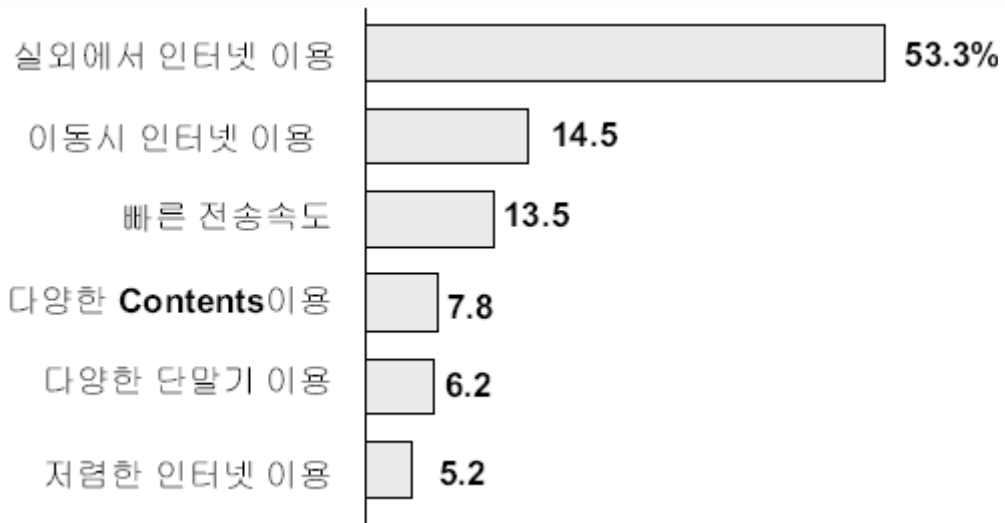
< : 2004. 08 >



< : ETRI 2004. 04 >



가



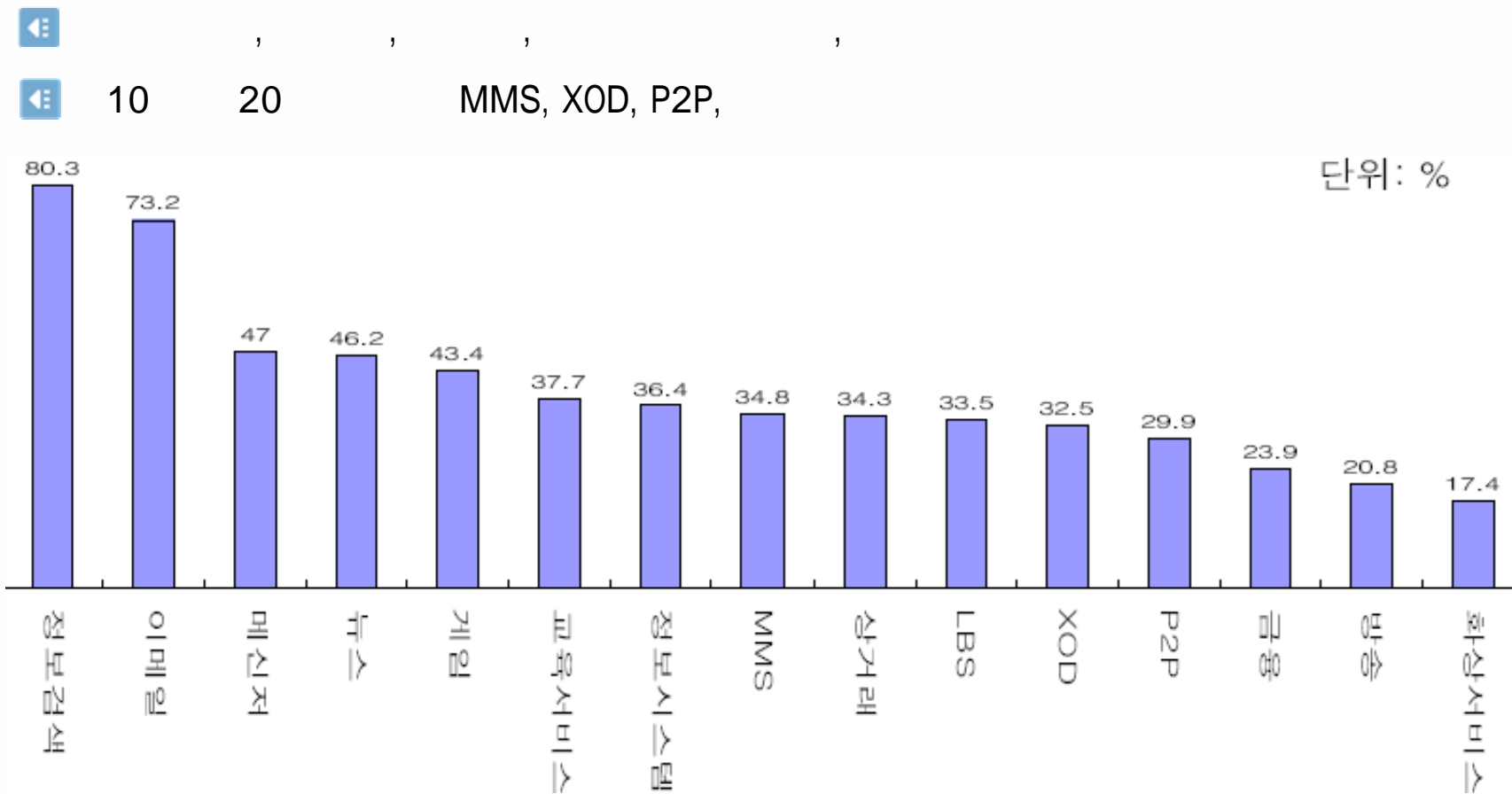
가

PDA

< : >

, ETRI 2004,04>

### 3) WiBro



# WiBro

# 가

## 국민 경제

- 경제적 파급효과
  - 생산유발, 부가가치 창출, 수출유발, 신규 고용 창출
  - 18조 산업유발 및 27만 고용효과(ETRI)
- 관련산업 해외진출역량 강화

## 통신 서비스

- 이동성, 속도, 요금에서 이용자 편익 증진
- 유무선 통합 선도
- 디지털 컨버전스 촉진
- 유비쿼터스 IT 전개

## 통신사업자

- 통신사업자의 신규 성장 및 수익원
- 통신사업자 제공하는 서비스 범위 확대
- 통신사업자간 경쟁역량 확충

신성장 동력원으로서 WiBro 서비스의 가능성

# WiBro

Wireless Broadband  
**WiBro**

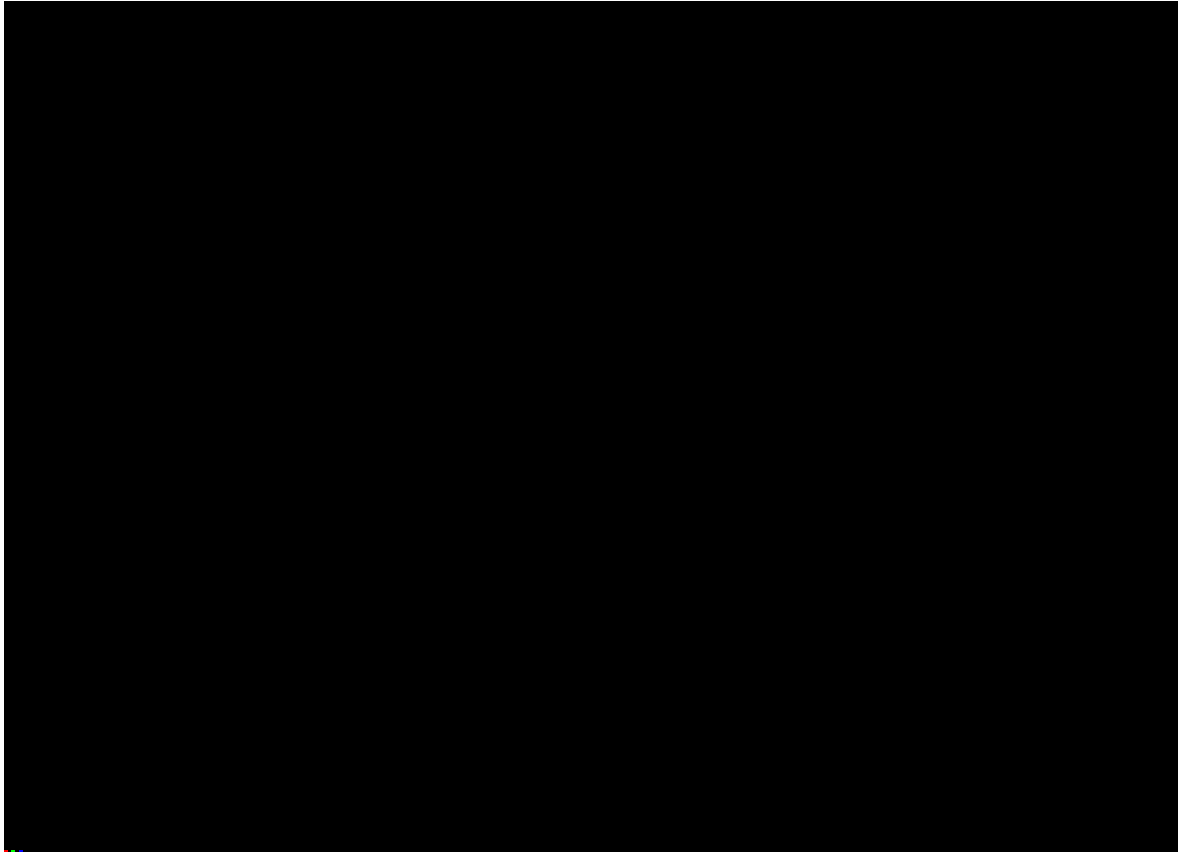
☐ WiBro      IOT<sup>1)</sup>



가

IOT<sup>1)</sup> : Interoperability Test,

# WiBro



< : KT WiBro >



- ◀ Krnet 2005
- ◀
- ◀ TTA
- ◀ ETRI
- ◀ <http://wibro.kt.co.kr>

